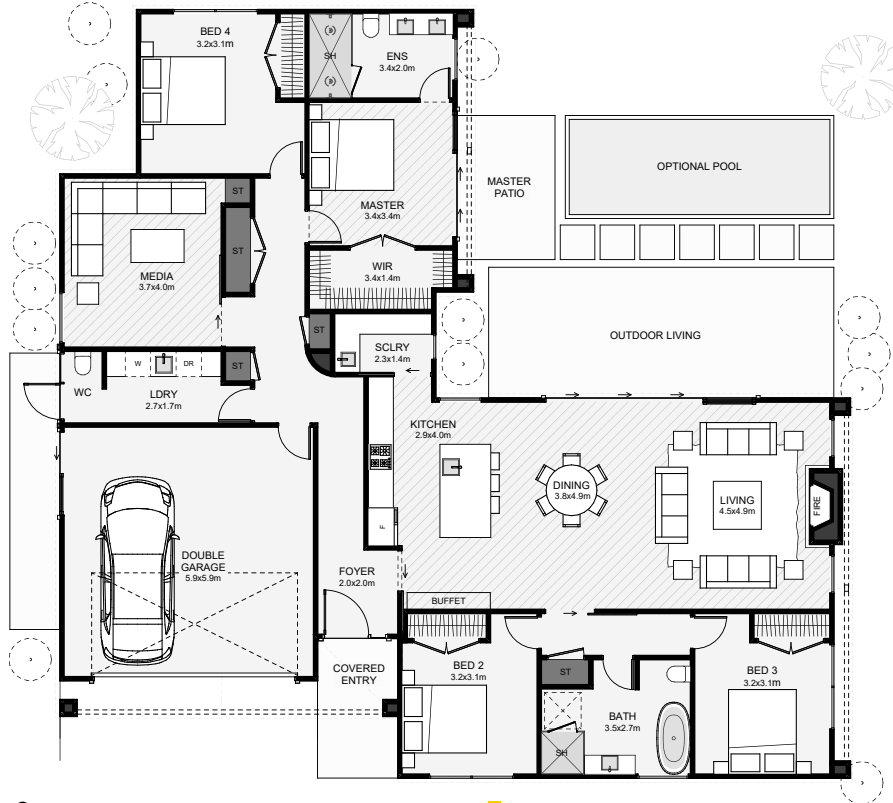




This L-shaped, coastal home creates a private outdoor sanctuary, visually enjoyed from both the living and the main bedroom. Features include separate bedrooms, a scullery, two lounges, lots of storage and the main bedroom suite that will have you feel like you're on holiday.



Floor Area: 222m²

2
 4
 2.5
 2

18.7m | 18.1m

Contact us:

Ph: 021 028 53570

E: thomas@charminghomes.co.nz

www.charminghomes.co.nz

