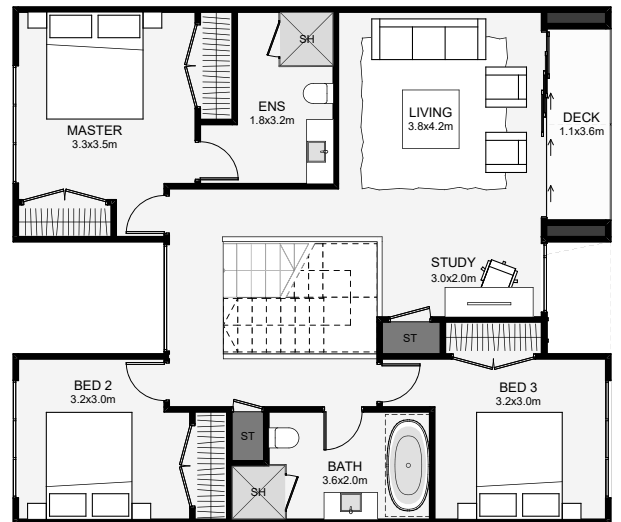
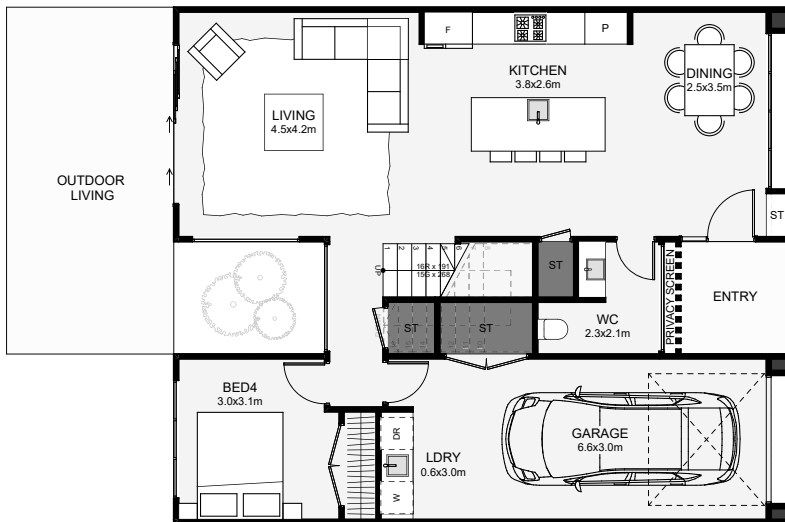




Here's a modern take on the traditional gable townhouse, finished in three claddings that will liven up any street. This four-bedroom design includes dual living, two bathrooms and an extra downstairs toilet, perfect for guests. A northern alcove is designed into this layout for a feature tree, something to be enjoyed inside from both levels. If you're going to build a townhouse, why not make it extraordinary to live in?



Floor Area: 185m<sup>2</sup>

1  
 4  
 2.5  
 2  
 11.2m  
 9.7m

Contact us:

Ph: 021 028 53570

E: [thomas@charminghomes.co.nz](mailto:thomas@charminghomes.co.nz)

[www.charminghomes.co.nz](http://www.charminghomes.co.nz)

