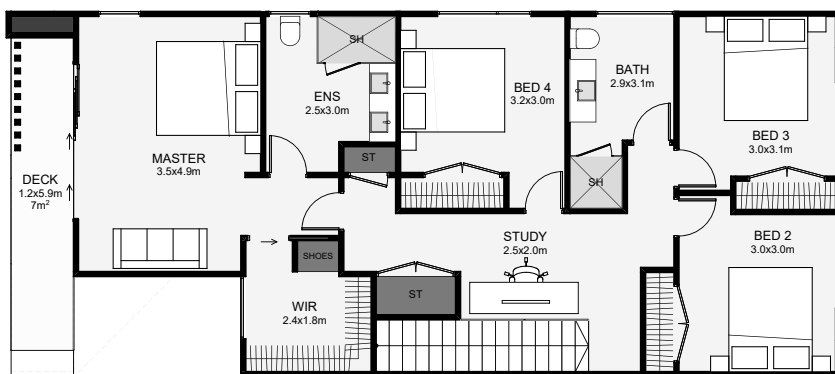
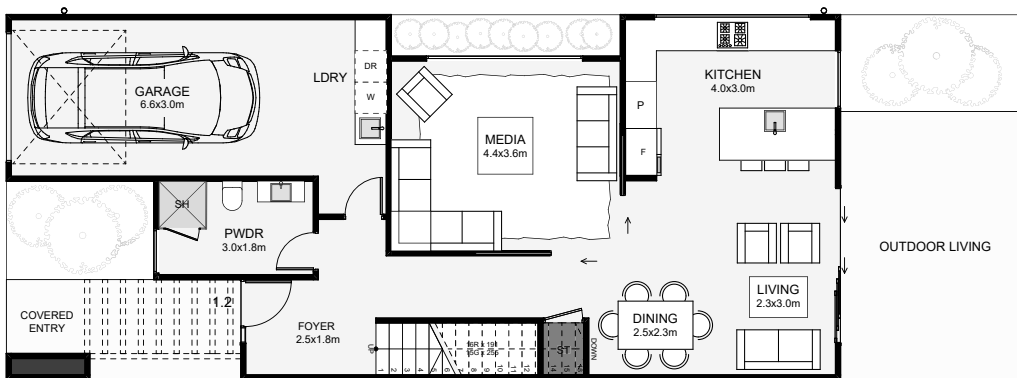




This ultra-modern, four-bedroom townhouse is designed to feel more like a family home. Downstairs, there's dual living, both accessible to the kitchen and a private powder room. Upstairs, is an open study, four bedrooms and two bathrooms. The master enjoys a large walk-in wardrobe, an ensuite and access to a long balcony that will impress! This townhouse has all the design boxes ticked for anyone with modern taste!



Floor Area: 188m²

1
 4
 2.5
 2
 18.0m
 7.0m

Contact us:

Ph: 021 028 53570

E: thomas@charminghomes.co.nz

www.charminghomes.co.nz

